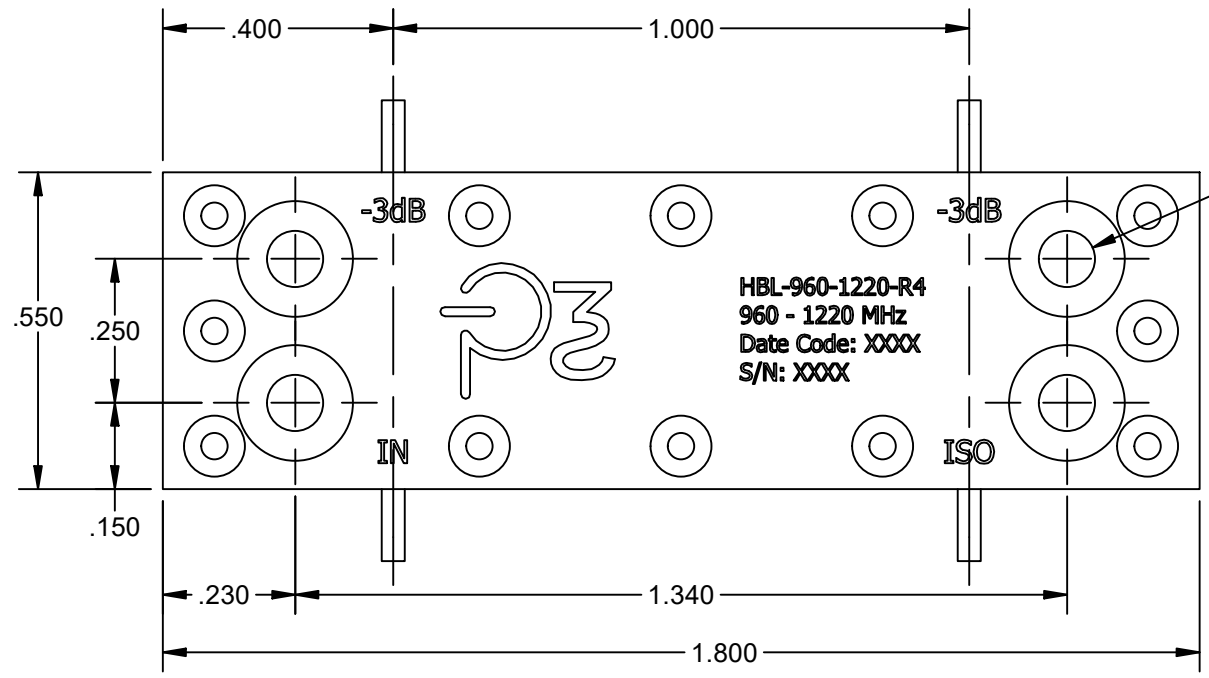
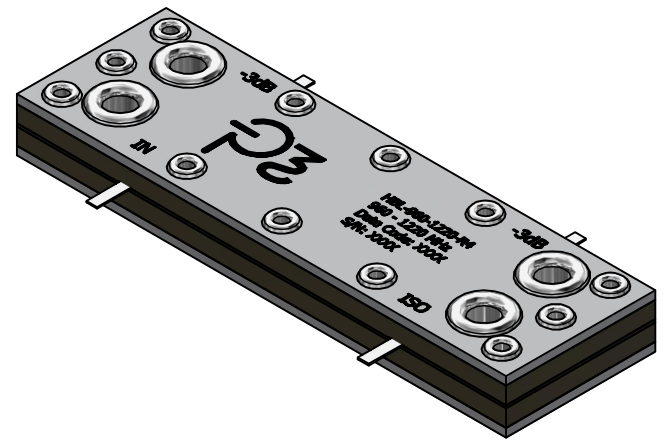
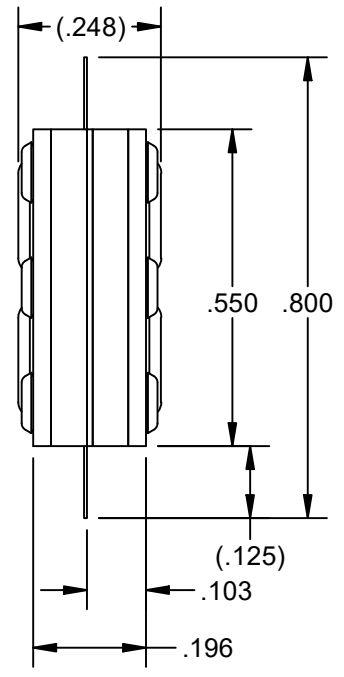


REV	RELEASE	DESCRIPTION	APPROVED	DATE
A	NEW	INITIAL RELEASE	JK	9/21/2021
B	UPDATE	CHANGED MOUNTING HOLE SPACING FROM 1.7" TO 1.5"	JK	9/22/2021
C	UPDATE	WIDTH TO 0.55" AND LENGTH TO 1.8", OUTER RIVETS MOVED IN	JK	9/23/2021



MOUNTING HOLES
4X Ø.097 THRU




ELECTRICAL SPECIFICATIONS:

FREQUENCY: 960 - 1220 MHz
POWER: 400 WATT CW
INSERTION LOSS: 0.20 dB
AMPLITUDE BALANCE: ±0.2 dB
PHASE BALANCE: ±2°
VSWR: 1.2:1 MAX
ISOLATION: 20 dB
OPERATING TEMP: -55°C TO +85°C
ENVIRONMENT: SEALED FOR HIGH HUMIDITY APPLICATIONS

MECHANICAL SPECIFICATIONS:

MARKING: PER MIL-STD-130
FINISH: CHEM-CONVERSION PER MIL-DTL-55413
SOLDER TABS: 99.99% PURE SILVER, 0.060" WIDE X 0.005" THICK

 PREFERRED POWER PRODUCTS STUART, FLORIDA 34997	UNLESS OTHERWISE SPECIFIED ALL DIMENSIONS ARE IN INCHES TOLERANCES: DECIMALS ANGULAR .X ± .1 ± .5° .XX ± .01 .XXX ± .005	PART NO	HBL-960-1220-R4			
		HYBRID-COUPLER 960 - 1220 MHz 400 WATT CW		CHECKED	PD 9/21/2021	APPROVED
		DRAWN	JK 9/21/2021	ENGINEER	PD 9/21/2021	
		CAGE CODE	7W5T7	SCALE	N/A	SHEET 1 OF 1

THIS DRAWING AND ALL CONTENTS HEREIN, ARE THE SOLE, PROPRIETARY PROPERTY OF PREFERRED POWER PRODUCTS, LLC AND MAY NOT BE USED, REPRODUCED OR DISCLOSED WITHOUT EXPRESSED WRITTEN CONSENT.